

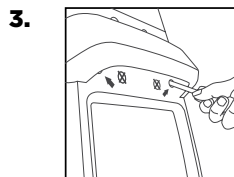
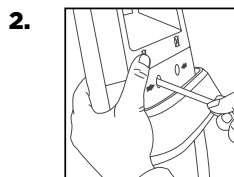
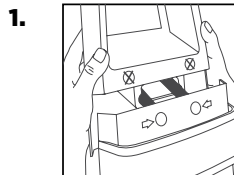
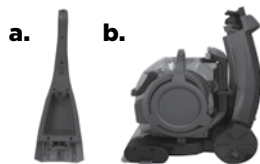
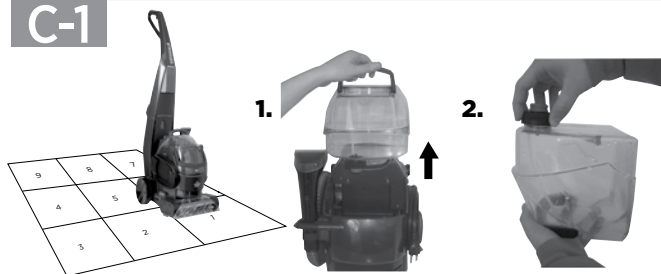


Bissell®

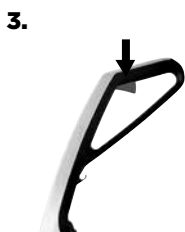
PROHEAT 2X LIFT-OFF CARPET & UPHOLSTERY CLEANER

USER GUIDE
2072N

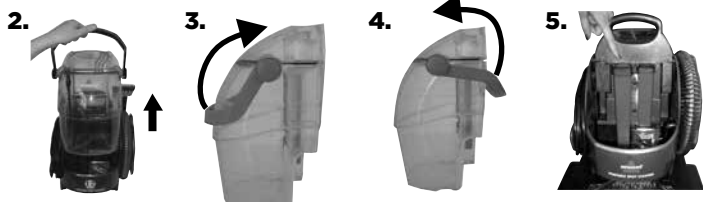


A**B****A-2****C-1**

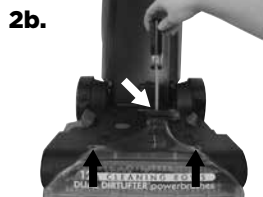
C-2



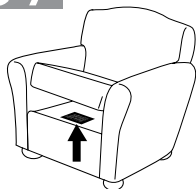
C-4



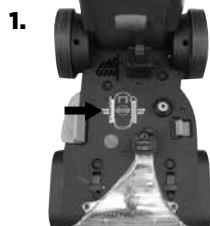
C-5



C-7



C-9



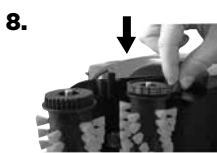
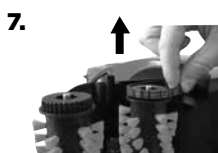
D-1



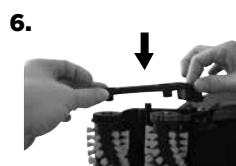
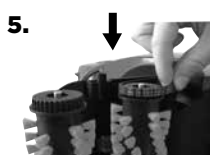
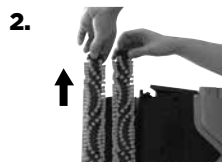
D-2



D-3



D-4



IMPORTANT SAFETY INSTRUCTIONS

READ ALL INSTRUCTIONS BEFORE USING YOUR DEEP CLEANER.

When using an electrical appliance, basic precautions should be observed, including the following.

WARNING TO REDUCE THE RISK OF FIRE, ELECTRIC SHOCK, OR INJURY:

- » Unplug from electrical socket when not in use and before cleaning, maintaining or servicing the appliance.
- » This appliance can be used by children aged from 8 years and above and persons with reduced physical, sensory or mental capabilities or lack of experience and knowledge if they have been given supervision or instruction concerning use of the appliance in a safe way and understand the hazards involved. Cleaning and user maintenance shall not be made by children without supervision.
- » Children should be supervised to ensure that they do not play with the appliance.
- » If the supply cable is damaged, it must be replaced by the manufacturer, its service agent, or similarly qualified persons in order to avoid a hazard.
- » Do not run appliance over cable.
- » Keep hair, loose clothing, fingers, and all parts of body away from openings and moving parts of the appliance and its accessories.
- » Use only the type and amount of liquids specified under the Operations section of this guide.
 - » Do not leave appliance when plugged in.
 - » Always connect to a properly earthed electrical socket. Do not modify earthed plug.
 - » Use indoors only.
 - » Do not allow to be used as a toy.
 - » Use only as described in the user guide.
 - » Use only manufacturer's recommended attachments.

- » Do not use with damaged cable or plug.
- » Do not immerse in water or liquid.
- » If appliance is not working as it should, has been dropped, damaged, left outdoors, or dropped into water; do not attempt to operate it and have it repaired at an authorised service center.
- » Liquid or steam must not be directed towards equipment containing electrical components.
- » Do not pull or carry by cable, use cable as a handle, close door on cable, or pull cable around sharp edges or corners.
- » Keep cable away from heated surfaces.
- » Do not unplug by pulling on cable.
- » To unplug, grasp the plug, not the cable.
- » Do not handle plug or appliance with wet hands.
- » Do not put any object into openings.
- » Do not use with any opening blocked; keep free of dust, lint, hair, and anything that may reduce air flow.
- » Turn off all controls before unplugging.
- » Use extra care when cleaning on stairs.
- » Do not use to pick up flammable or combustible liquids, such as petrol, or use in areas where they may be present.
- » Do not pick up toxic material (chlorine bleach, ammonia, drain cleaner, etc.).
- » Do not use appliance in an enclosed space filled with vapors given off by oil base paint, some moth-proofing substances, flammable dust, or other explosive or toxic vapors.
- » Do not pick up hard or sharp objects such as glass, nails, screws, coins, etc.
- » Keep appliance on a level surface.
- » Do not carry appliance while in use.
- » Unplug before attaching the TurboBrush Tool.
- » Plastic film can be dangerous. To avoid danger of suffocation, keep away from children.

WARNING

TO REDUCE THE RISK OF FIRE AND ELECTRIC SHOCK, USE INDOORS ONLY. DO NOT IMMERSE. USE ONLY ON SURFACES MOISTENED BY THE CLEANING PROCESS. USE ONLY BISSELL CLEANING PRODUCTS INTENDED FOR USE WITH THIS MACHINE.

WARNING

TO REDUCE THE RISK OF FIRE AND ELECTRIC SHOCK, ALWAYS INSTALL FLOAT BEFORE ANY WET PICK-UP OPERATION.

SAVE THESE INSTRUCTIONS

FOR OPERATION ON A 220-240 VOLT A.C. 50-60 HZ POWER SUPPLY ONLY.

This model is for household use only.

Thanks for buying a BISSELL deep cleaner

We're glad you purchased a BISSELL deep cleaner. Everything we know about floor care went into the design and construction of this complete, high-tech home cleaning system.





Your BISSELL deep cleaner is well made, and we back it with a limited two-year guarantee. We also stand behind it with a knowledgeable, dedicated Consumer Care department, so, should you ever have a problem, you'll receive fast, considerate assistance.

My great-grandfather invented the floor sweeper in 1876. Today, BISSELL is a global leader in the design, manufacture, and service of high quality homecare products like your BISSELL deep cleaner.

Thanks again, from all of us at BISSELL.


Mark J. Bissell
Chairman & CEO

Symbol Definitions

| | | |
|---|----------------|---|
|  | WARNING | RISK OF FIRE, ELECTRIC SHOCK, OR INJURY. |
|  | TIP | NOTE OR HINT WHICH IS NOT ESSENTIAL BUT MAY IMPROVE USABILITY. |
|  | GUIDE | READ USER GUIDE FOR COMPLETE SAFETY AND USER INSTRUCTIONS. |
|  | WEEE | DO NOT THROW THE APPLIANCE AWAY WITH THE NORMAL HOUSEHOLD WASTE AT THE END OF ITS LIFE, INSTEAD HAND IT IN AT AN OFFICIAL COLLECTION POINT FOR RECYCLING. BY DOING THIS YOU WILL HELP TO PRESERVE THE ENVIRONMENT. |

A Product View



Do not plug in your cleaner until you have completely assembled it per the following instructions and are familiar with all instructions and operating procedures.

- 1 Spray Trigger
- 2 Upper Handle
- 3 Upright Cleaning Mode Indicator Light
- 4 Carry Handle
- 5 Cleaning Tool (tools vary by model)
- 6 Formula & Water Tank
- 7 Power Button
- 8 Quick Release Cable Wrap
- 9 Power Cable
- 10 Dirty Water Tank
- 11 Dirty Water Tank Carry Handle
- 12 Flex Hose
- 13 Portable Spot Cleaning Release Pedal
- 14 EdgeSweep™ Brushes
- 15 Removeable Nozzle Assembly
- 16 Cable Clip
- 17 Tool Storage
- 18 Support Handle
- 19 Tool Storage (select models)
- 20 Hose Secure Latch
- 21 Recline Pedal

A-2 Cleaning Formulas

Always use genuine BISSELL deep cleaning formulas. Non-BISSELL cleaning formulas may harm the cleaner and may void the guarantee.

- 22 1.5 L 2X Wash & Protect PRO Professional Stain & Odour Formula w/ Scotchgard™ Protector
- 23 1.5 L 2X Wash & Protect PET Pet Stain & Odour Formula w/ Scotchgard™ Protector
- 24 1.5 L 2X Wash & Protect Stain & Odour Formula w/ Scotchgard™ Protector
- 25 1.5 L 2X* Wash & Refresh Blossom & Breeze w/ Febreze™ Freshness

*2X concentrated formula, 60 ml is equivalent to 120 ml of non-concentrated formula



To reduce the risk of fire and electric shock due to internal component damage, use only BISSELL cleaning fluids intended for use with the deep cleaner.



To reduce the risk of fire, use only BISSELL deep cleaning formula for full size machines in your deep cleaner. Use of cleaning formulas that contain lemon or pine oil may damage this appliance and void the guarantee. Chemical spot cleaners or solvent-based soil removers should not be used. These products may react with the plastic materials used in your deep cleaner causing cracking or pitting.

Scotchgard™ is a trademark of 3M®.

Febreze® and related trademarks are owned by The Procter & Gamble Company, Cincinnati, Ohio, and used under license by BISSELL Homecare, Inc.

B Assembly

There are two easy to assemble components:

A. Upper Uandle

B. Portable Spot Cleaner/Base

The only tool you will need to assemble your cleaner is a long Phillips-head screwdriver.

1. Slide Upper Handle onto body of machine by guiding 2 posts on body into opening on Upper Handle.

2. Firmly holding Upper Handle in place, screw 2 screws into marked holes at an upward angle above Support Handle.

3. At an upward angle, screw remaining 2 screws into marked outermost holes under support handle.

4. Wrap Power Cable around Quick Release Cable Wrap.

5. Wrap Flex Hose around Hose Wrap and secure with Hose Secure Latch.

6. Align product as shown and firmly push down Portable Spot Cleaner until it is secured on both sides.

To further check if Portable Spot Cleaner is secure, plug in and turn on to verify upright cleaning mode indicator light is illuminated. If it does not illuminate, release Portable Spot Cleaner and re-secure by pushing firmly until both sides snap into place.

7. Check latches on both sides to confirm it is secured. Refer to image 6.

8. Snap attachment(s) into back of unit.

NOTE: Portable Spot Cleaner must be fully secure to operate in upright cleaning mode.

C Operations

Before you clean

1. Plan activities to give carpet time to dry.
2. Move furniture to another area if cleaning entire room (optional).
3. Vacuum area with a dry vacuum cleaner thoroughly before deep cleaning.
4. Plan your cleaning route to leave an exit path. It is best to begin cleaning in the corner farthest from your exit.

UPRIGHT CLEANING MODE

C-1 Filling Formula & Water Tank

1. Remove tank from base of machine by lifting up Tank Carry Handle.

NOTE: This tank was designed with a flat bottom so it can be easily filled.

2. Unscrew black cap and remove bottle insert.
3. Fill tank with hand hot (60°C/140°F MAX) tap water to water fill line. Add 60 mL of BISSELL 2X formula to tank. **Do not boil or microwave water as it can destroy the tank.**
4. Replace bottle insert in tank and tighten black cap. Replace tank on machine.



Take care not to run over loose objects or edges of area rugs. Stalling the brush may result in premature belt failure.

C-2 Carpet cleaning

1. Plug into a proper outlet and press Power Button.
2. With foot, press gray Recline Pedal, located on back of machine in between wheels.
3. While pressing Spray Trigger, make one slow forward wet pass and another one back. **Caution: Do not overwet.**
4. Release Spray Trigger and make one slow forward and backward pass over same area.
5. Repeat cleaning passes until solution being suctioned up appears clean. Continue passes without pressing Spray Trigger until water is no longer being suctioned up. Repeated passes will help aid in dry time.

NOTE: Machine may be equipped with a circuit breaker that will automatically shut off the brush if a large or loose object is caught in the Brush Roll. If that happens, be sure to unplug machine, remove foreign object, and then plug machine back in to reset circuit breaker.

ATTENTION

Some Berber carpets have a tendency to fuzz with wear. Repeated strokes in the same area with an ordinary vacuum or deep cleaner may aggravate this condition.



Brush may unexpectedly restart. To reduce the risk of injury from moving parts, unplug before cleaning or servicing.

C-3 Area rug cleaning

Important! Please check manufacturer's tag before cleaning area rugs for any specialized cleaning instructions. We do not recommend deep cleaning delicate, silk, wool, antique, or area rugs without a manufacturer's tag.

When cleaning area rugs, place the rug on a sealed surface and test a small, inconspicuous area for colourfastness. Your carpet cleaner should not be used on unsealed surfaces.

Follow carpet cleaning instruction in section C-2. Keep the foot of the cleaner perpendicular to the rug's edge with each cleaning pass to prevent damage.

C-4 Empty Dirty Water Tank

1. When Dirty Water Tank reaches "FULL" line on tank, it is time to empty.
2. Remove Dirty Water Tank and carry to a utility sink, toilet or outside (where you will dispose of the dirty water).
3. To unlock Dirty Water Tank Lid, rotate handle over back of tank. Remove lid and pour out dirty water. Rinse out Dirty Water Tank to remove any debris.
4. Replace top of tank, and rotate handle forward to lock in place on front of tank.
5. Before replacing tank on machine, wipe debris from red filter.

C-5 Cleaning your machine

1. Flush out machine of any remaining residual solution.

a. Fill Formula & Water Tank with hand hot (60°C/140°F MAX) tap water and turn on machine.

b. Recline handle and press Spray Trigger for about 15 seconds while making forward and backward passes on carpet. Continue without pressing Spray Trigger until there is no more water being suctioned up.

c. Turn OFF machine and wrap Power Cable. Make sure Dirty Water Tank and the Formula & Water Tank are emptied, rinsed, and dried before next use.

d. Before you replace tank, clean all debris from red filter screen.

2. Rinse Nozzle Assembly of any dirt and debris.

a. Remove Portable Spot Cleaner from base of the machine.

b. Remove Nozzle Assembly from machine by unscrewing 3 screws and lifting away upper and lower nozzle.

c. Rinse upper and lower nozzles in clean tap water.

d. Place lower nozzle back onto machine by hooking tabs into holes on bottom sides of front of machine.

e. Place upper nozzle onto lower nozzle by hooking tabs into the holes on front of lower nozzle. Secure with 3 screws.

3. Inside of end caps can be wiped out with a clean paper towel, or for a more thorough clean, end caps can be taken off and rinsed clean.

4. Any loose hair or debris can be pulled from Brush Rolls and thrown away. For a more thorough clean, follow directions in section D-4 for removal of Brush Rolls. Machine is now ready to be stored.

NOTE: Store cleaner in a protected, dry area. Since product uses water, it must not be stored where there is a danger of freezing. Freezing will damage internal components and void the guarantee.

PORTABLE SPOT CLEANING MODE

C-6 Preparing the machine

1. Step on Portable Spot Cleaning Pedal to release Portable Spot Cleaner.
2. Release Flex Hose by twisting Hose Secure Latch clockwise. Unwrap Flex Hose completely.
3. Attach desired cleaning tool to hose grip until it snaps together. Make certain tool is securely attached.
4. Twist Quick Release Cable Wrap clockwise to unwrap Power Cable completely and plug into grounded outlet.

Filling Formula & Water Tank

Follow instructions for filling tank in upright cleaning mode in section C-1.

C-7 Cleaning with tools

Important! If using to clean upholstery, check upholstery tags. Check manufacturer's tag before cleaning. "W" or "WS" on tag means you can use your deep cleaner. If tag is coded with an "X" or an "S" (with a diagonal stripe through it), or says "Dry Clean Only," do not proceed with any deep cleaning machine. Do not use on velvet or silk. If manufacturer's tag is missing or not coded, check with your furniture dealer.

1. Attach cleaning tool of choice to end of hose.
2. Hold tool approximately 2.5 cm above soiled surface. Press Spray Trigger to apply cleaning solution to soiled area.

Caution: Do not overwet.

NOTE: Hold end of hose below tank water level to help prime the portable spot cleaner.

3. Using brush on tool, gently scrub the area to be cleaned.
4. Apply downward pressure on tool and pull it toward you. The suction will remove dirt and cleaning solution. Continue until no more dirt can be removed.

IMPORTANT

Check for colourfastness in an inconspicuous place. If possible, check upholstery stuffing. Coloured stuffing may bleed through fabric when it becomes wet.

Empty Dirty Water Tank

Follow instructions under Empty Dirty Water Tank in section C-4.

C-8 Cleaning Portable Machine

1. Before turning off machine, suction up clean water from a bowl or from tap to rinse out interior of the hose. Then, lift the Cleaning Tool and point it upwards to drain any remaining water into tank.
2. Remove and rinse tools in clean, running water. Dry and replace in tool storage provided.
3. Coil Flex Hose around Hose Wrap and secure with latch.
4. Check suction gate and if it appears dirty, follow steps 1-4 under Cleaning Suction Gate in section D-1.

C-9 Replacing Portable Machine on base

1. Align machine as graphic shows, with cable side on left and hose side on right.
2. Push down Portable Spot Cleaner until it can be heard clicking securely into place. Test fit by pulling up on Carry Handle to make sure it is secure.

NE D Care, Maintenance, & Storage

Machine care (check regularly)

D-1 Cleaning suction gate

The suction gate automatically diverts air when the Portable Deep Cleaner is detached. This should be checked and cleaned regularly for any dirt and debris.

1. Step on pedal and remove Portable Spot Cleaner. Remove Dirty Water Tank.
2. Remove two screws and pull off suction gate door.
3. Wipe suction gate clean and rinse suction gate door under water.
4. Replace suction gate door and two screws.

D-2 Cleaning spray tips

1. Step on pedal and remove Portable Spot Cleaner.
2. To remove black spray tip, unlatch tab on front portion of spray tip from base of machine and pull up and out of red receiver.
3. Clean by rinsing under water.
4. Replace black spray tip by inserting back into red receiver and latching tab back down into base of machine.
5. Repeat steps on second spray tip.



To reduce the risk of electric shock, turn power switch OFF and disconnect plug from electrical outlet before performing maintenance or troubleshooting checks.

D-3 Small Belt removal and replacement (as needed)

Occasional replacement of one or both belts may become necessary. If needed, please follow instructions below.

1. Turn off machine and unplug from outlet. Remove Portable Spot Cleaner.
2. Remove Nozzle Assembly from machine. Refer to step 2 in section C-5.
3. Turn machine on its side.

IMPORTANT: With Portable Spot Cleaning pedal facing down:

4. Remove end cap by unscrewing 3 screws. Take care not to drop screws into machine.
5. Remove 1 silver screw from pivot arm.
6. Remove pivot arm by gently lifting up.
7. Remove Small Brush Belt.
8. Replace Small Brush Belt and reverse steps above.
9. Manually rotate brushes by hand to make sure they move freely. There may be a slight resistance from motor.

D-4 Brush removal and Large Belt replacement (as needed)

Brushes can be removed for cleaning or replacement as needed.

1. Follow Small Belt removal instructions steps 1-7 in section D-3.
2. Remove Brush Rolls by pulling off of metal rods. **Be careful not to lose small washer at each end of Brush Rolls.**
3. Re-attach Large Belt to grooves on end of new or cleaned Brush Rolls. If Belt is damaged, replace with new Belt.
4. Place cleaned or new Brush Rolls back onto rods. Make sure one washer is on each end of rollers prior to sliding onto rod. Be sure brush is seated completely on rod.
5. Replace Small Belt over grooves in back roller and metal cog.
6. Replace pivot arm and secure with silver screw.
7. Re-attach end cap by tightening with (3) black screws.
8. Replace Nozzle Assembly back onto machine. Refer to step 2 in section C-5.

For questions or assistance installing or replacing Belts or Brush Rolls, please call **BISSELL Consumer Care.**

Consumer Guarantee

This Guarantee only applies outside of the USA and Canada. It is provided by BISSELL International Trading Company BV ("BISSELL").

This Guarantee is provided by BISSELL. It gives you specific rights. It is offered as an additional benefit to your rights under law. You also have other rights under law which may vary from country to country. You can find out about your legal rights and remedies by contacting your local consumer advice service. Nothing in this Guarantee will replace or lessen any of your legal rights or remedies. If you need additional instruction regarding this Guarantee or have questions regarding what it may cover, please contact BISSELL Consumer Care or contact your local distributor.

This Guarantee is given to the original purchaser of the product from new and is not transferable. You must be able to evidence the date of purchase in order to claim under this Guarantee.

Limited 2 Year Guarantee (from the date of purchase by original purchaser)

Subject to the *EXCEPTIONS AND EXCLUSIONS identified below, BISSELL will repair or replace (with new, refurbished, lightly used, or remanufactured components or products), at BISSELL's option, free of charge, any defective or malfunctioning part or product.

BISSELL recommends that the original packaging and evidence of the date of purchase be kept for the duration of the Guarantee period in case the need arises within the period to claim on the Guarantee. Keeping the original packaging will assist with any necessary re-packaging and transportation but is not a condition of the Guarantee.

If your product is replaced by BISSELL under this Guarantee, the new item will benefit from the remainder of the term of this Guarantee (calculated from the date of the original purchase). The period of this Guarantee shall not be extended whether or not your product is repaired or replaced.

*EXCEPTIONS AND EXCLUSIONS FROM THE TERMS OF THE GUARANTEE

This Guarantee applies to products used for personal domestic use and not commercial or hire purposes. Consumable components such as filters, belts and mop pads, which must be replaced or serviced by the user from time to time, are not covered by this Guarantee.

This Guarantee does not apply to any defect arising from fair wear and tear. Damage or malfunction caused by the user or any third party whether as a result of accident, negligence, abuse, neglect, or any other use not in accordance with the User Guide is not covered by this Guarantee.

An unauthorised repair (or attempted repair) may void this Guarantee whether or not damage has been caused by that repair/attempt.

Removing or tampering with the Product Rating Label on the product or rendering it illegible will void this Guarantee.

SAVE AS SET OUT BELOW BISSELL AND ITS DISTRIBUTORS ARE NOT LIABLE FOR ANY LOSS OR DAMAGE THAT IS NOT FORESEEABLE OR FOR INCIDENTAL OR CONSEQUENTIAL DAMAGES OF ANY NATURE ASSOCIATED WITH THE USE OF THIS PRODUCT INCLUDING WITHOUT LIMITATION LOSS OF PROFIT, LOSS OF BUSINESS, BUSINESS INTERRUPTION, LOSS OF OPPORTUNITY, DISTRESS, INCONVENIENCE OR DISAPPOINTMENT. SAVE AS SET OUT BELOW BISSELL'S LIABILITY WILL NOT EXCEED THE PURCHASE PRICE OF THE PRODUCT.

BISSELL DOES NOT EXCLUDE OR LIMIT IN ANY WAY ITS LIABILITY FOR (A) DEATH OR PERSONAL INJURY CAUSED BY OUR NEGLIGENCE OR THE NEGLIGENCE OF OUR EMPLOYEES, AGENTS OR SUBCONTRACTORS; (B) FRAUD OR FRAUDULENT MISREPRESENTATION; (C) OR FOR ANY OTHER MATTER WHICH CANNOT BE EXCLUDED OR LIMITED UNDER LAW.

Consumer Care

If your BISSELL product should require service or to claim under our limited guarantee, please contact us as follows:

Website:

www.BISSELL.eu

Visit the BISSELL website: www.BISSELL.eu

When contacting BISSELL, have model number of cleaner available.

Please record your Model Number: _____ Please record your Purchase Date: _____

NOTE: Please keep your original sales receipt. It provides proof of the date of purchase in the event of a Guarantee claim. See Guarantee for details.