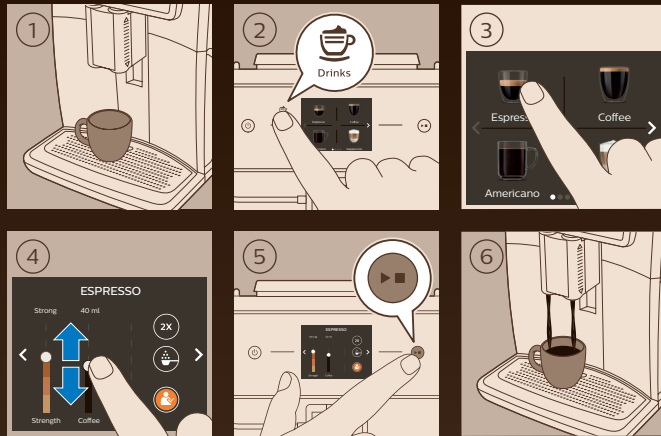
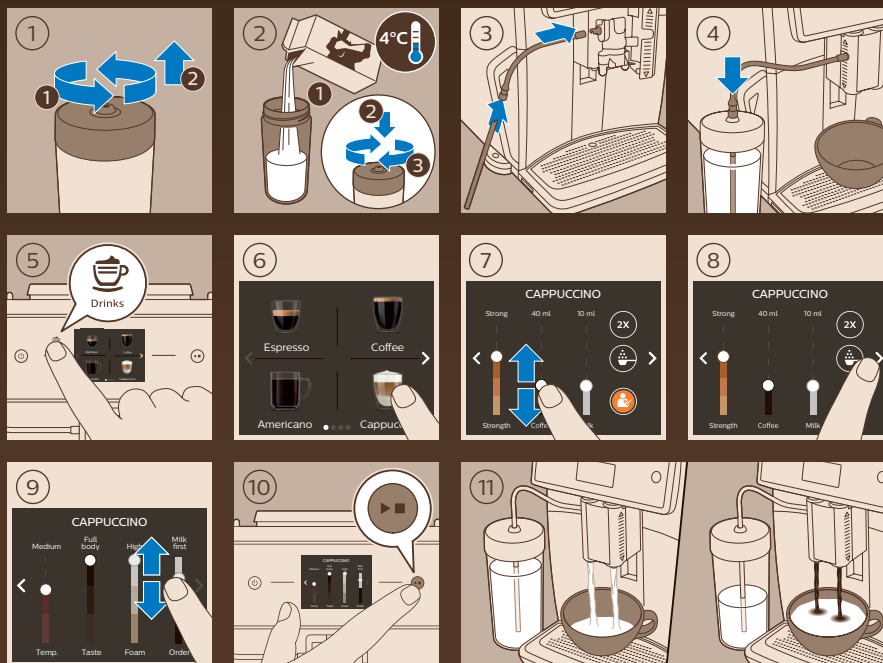


ESPRESSO



CAPPUCCINO



www.saeco.com/care

4219.450.1009.1

Saeco



Xelsis

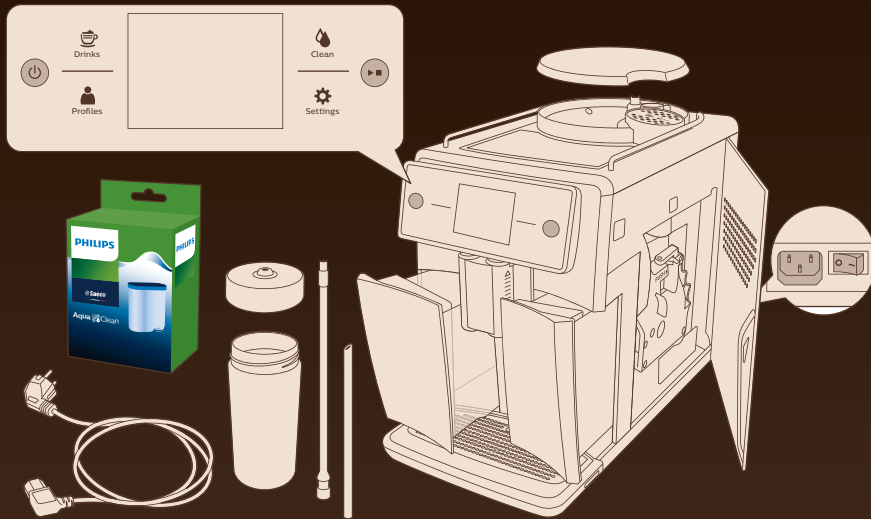
SM7786, SM7785, SM7686,
SM7685, SM7684, SM7683,
SM7682, SM7680



WWW.SAECO.COM/CARE

PHILIPS

Saeco, a Philips brand



FIRST USE

1. Plug the power cord into the wall outlet.

2. Plug the power cord into the machine's power inlet.

3. Select a language: English, Italiano, Deutsch, Français.

4. Add water to the water tank.

5. Insert the AquaClean filter into the filter holder.

6. Fill the water tank with water up to the MAX level.

7. Close the filter holder.

8. Place a cup under the spout.

9. Press the power button to start the machine.

10. The machine dispenses water into the cup.

11. Would you like to install the 5000 cups without descaling? AquaClean filter to enjoy? (Yes/No)

12. Insert the AquaClean filter into the filter holder.

13. Press the power button for 5 seconds.

14. Wait for 30 seconds.

15. Place a container under the spout.

16. Fill the water tank with water up to the MAX level.

17. Close the filter holder.

18. Place a cup under the spout.

19. Press the power button to start the machine.

20. ACTIVATING FILTER..

21. The machine dispenses water into the cup.

22. Wait for 1 second.

23. The machine dispenses water into the cup.

24. Wait for 1 minute.

25. Select the water hardness level (1-4).

26. HEATING UP.

27. RINSING.

28. The machine dispenses water into the cup.

29. Place a cup under the spout.

30. Add coffee grounds to the cup.

31. For more information, please visit www.saeco.com/care

www.saeco.com/care

www.saeco.com/care